

Instructions on how to create a map of your project site/area using NatureKit Victoria by creating a polygon shape file.

Start by creating a file on your computer where you will store any files your will create, e.g. call it 'project maps' and put it where you can easily find it again.

NatureKit is a new tool to map and report on Victoria's biodiversity values and investment prospects. It is DELWP's biodiversity web mapping and reporting tool that has been developed to replace Biodiversity Interactive Map (BIM).

NatureKit displays information on Victoria's:

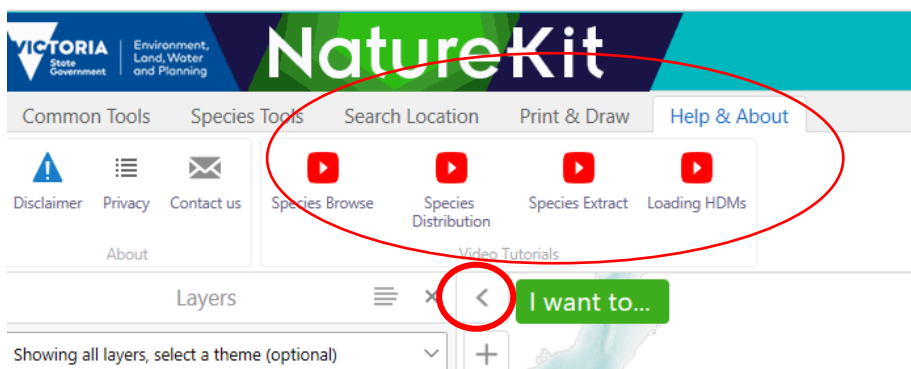
- Biodiversity values
- Investment prospects
- Flora and fauna distribution
- Native vegetation
- Marine bathymetry and habitat
- Disturbance
- Land administration and classification

NatureKit allows you to zoom in and out, pan around the map, identify features, perform queries, generate reports, and create printable pdf maps or images.

Copy and paste the follow link into your web browser. (If possible use Google Chrome as the preferred Web Browser).

<http://maps.biodiversity.vic.gov.au/viewer/?viewer=NatureKit>

There are a few videos in NatureKit that you can watch to get you started using it as a useful tool. These are found under the Help and About Tab.



You may also need to click the arrow on the top left of screen to expand the '**L**ayers' information.

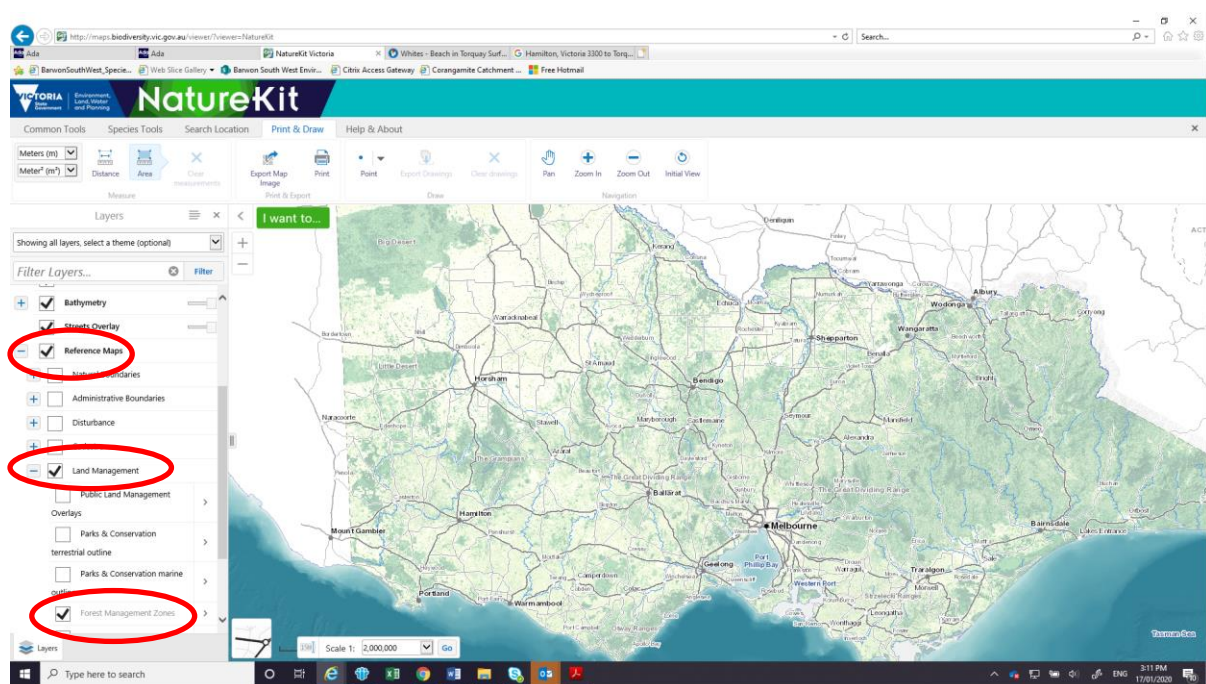
Customising the map to assist with mapping sites

On the left hand side of screen under **'Nature Print'** and **'Strategic Biodiversity Values'**, slide the bar on the right from right to the left to reduce the colours a bit and help pick up landscape features.

If you undertake projects on public land the following instructions may help

At the bottom of the list on the left hand side of the screen under **'Reference Maps'** – tick the box and expand the box by clicking on the **'+'** symbol

Then from that drop down list tick **'Land Management'** and again expand the box by clicking **'+'** symbol, then select **'Forest Management Zone'** which will colour the public land to its different land management status including Park Reserves. You may need to zoom in for the layer to appear, see instructions below.



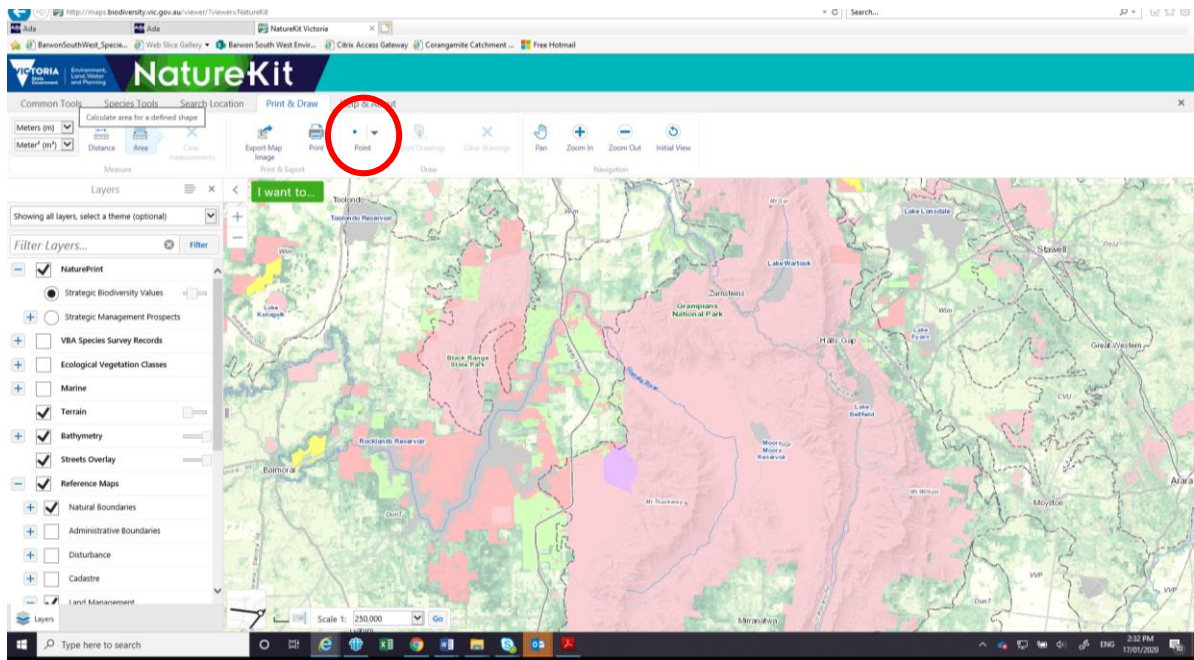
To create a map/shape file of your project/activity area

To move around the map use the left click mouse button to move and centre the map over your site.

Zoom in the map to your selected project or activity area using either the **'+/-'** buttons at the top left hand corner of the map or by rolling the central bar on your mouse.

From the tool bar across the top beneath the NatureKit heading, select **'Print & Draw'** and click on the **'Point'** symbol on the next row. Using down arrow select the **'Freehand Shape'** symbol,

If the tool bar is not already located above the map then you can open it by looking at the top left hand corner of the map, click on **"I want to..."** and select **'Open the Toolbar'** from drop down list.



Then to draw the shape, using the left mouse button, carefully hold the button down move your way around the shape/area you want draw on the map, when finished release the mouse button double to close off the shape.

To create a map file that DELWP can insert directly into a mapping product select '**Export Drawings**' which will create a '**.shp**', click **OK** to confirm.

To save the file select '**save as**' and then save it to folder you created at the start. If you are providing information on more than one location, then number your sites in the spread sheet and give the corresponding map the same number as the site in the spreadsheet. You can rename the file e.g. add a '1' to it before you hit the save button or even give it a relevant site name.

NOTE: Depending on your browser or computer the files may appear along the bottom of the screen. If this happens then open them and save them in your folder. It may ask you to save a zip file. If this is the case, then save the whole zip file and you can email the zip file to us.

If this is too difficult then perhaps email us a screen grab of the area you have drawn on the map.

To clear drawn images from the screen

Once you have completed and saved the site or you want to start again, click on **'Clear Drawings'** in the tool bar, and click **OK** in the pop up screen that say **'Clear All'** and you can start drawing your new area/shape.

